

FOR SALE

RESIDENTIAL - CONDOMINIUM 1,066SQFT (99SQM) / CALL FOR PRICE!

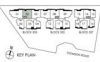
+65 9144 1214



3 - Bedroom + Study

TYPE C1-1
99 sqm / 1,066 sqft
#02-02 to #05-02

TYPE C1-1P
99 sqm / 1,066 sqft
#01-02



RESIDENTIAL - CONDOMINIUM

333 - 337 THOMSON ROAD, NEWTON, NOVENA,
SINGAPORE 307675

- LISTING ID: SGLD46016679
- TENURE: FREEHOLD
- TITLE: N/A
- SIZE BUILT-UP: 1,066SQFT (99SQM)
- SIZE LAND: 1.317AC (0.533HA)
- NO. OF FLOORS: 5
- FLOOR/LEVEL: N/A - N/A
- BED ROOMS: 3+1
- BATH ROOMS: 3
- MAIDS ROOMS: N/A
- PARKING SPACES: N/A
- LAYOUT TYPE: OTHER
- FACING: N/A
- VIEWING: OTHER
- SELLING PRICE: **CALL FOR PRICE!**
- COMPLETION YEAR: 2025
- CONDITION: ORIGINAL CONDITION
- FURNISHING: PARTIALLY FURNISHED
- LISTING DATE: MAY 06, 2021

PEAK RESIDENCE

Condominium for Sale: Partially furnished, 3 bedroom, 3 bathroom. Completed in 2025, this unit is in original condition. Tenure: Freehold Located in Singapore's district D11 near Newton, Novena in the area Newton (Central region).

INTERIOR FACILITIES

- Air-Conditioning
- Balcony

OTHER INTERIOR FEATURES

- Cooker Hob/Hood
- Fridge
- Dryer
- Intercom

EXTERIOR FACILITIES

- 24 Hours Security
- Covered Car Park
- Clubhouse
- Jacuzzi

VISIT THIS PROPERTY AT: <https://www.sophiatanproperties.com/property/SGLD46016679>

SOPHIA TAN - HUTTONS ASIA PTE LTD

3 Bishan Place #05-01 CPF Bishan Building
D20, 579838, Singapore

+65 9144 1214
WhatsApp Me

sptan818@gmail.com

<https://www.sophiatanproperties.com>

QR Code
Scan QR Code

Huttons® Call for Viewing
The Agency of Choice +65-91441214