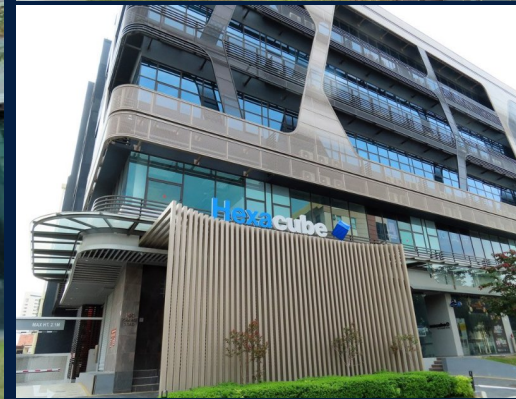


FOR SALE

COMMERCIAL - RETAIL
258SQFT (24SQM) / S\$ 755,000

+65 9144 1214



COMMERCIAL - RETAIL HEXACUBE, 160, CHANGI ROAD, SINGAPORE 419728

- LISTING ID: SGLA70502927
- TENURE: FREEHOLD
- TITLE: N/A
- SIZE BUILT-UP: 258SQFT (24SQM)
- SIZE LAND: N/A
- NO. OF FLOORS: N/A
- FLOOR/LEVEL: N/A - N/A
- PARKING SPACES: N/A
- LAYOUT TYPE: N/A
- FACING: N/A
- VIEWING: N/A
- SELLING PRICE: S\$ 755,000 **NEGOTIABLE**
2,926PSF (31,499PSM)
- COMPLETION YEAR: N/A
- CONDITION: N/A
- LISTING DATE: MAR 24, 2021

160 CHANGI ROAD, #01-11 HEXACUBE

Hexacube located at Changi is a freehold commercial building, which consists of 5 stories and a basement. With a total of 73 units, it is made up of a mixture of shops, restaurants and offices. It is a spanking new landmark that merges work and pleasure for a truly exceptional experience with easy access to the airport, expressways and MRT station as well. - Retail Shop - Feehold - Commercial

EXTERIOR FACILITIES

- 24 Hours Security

VISIT THIS PROPERTY AT: <https://www.sophiatanproperties.com/property/SGLA70502927>



SOPHIA TAN - HUTTONS ASIA PTE LTD

3 Bishan Place #05-01 CPF Bishan Building
D20, 579838, Singapore

+65 9144 1214
WhatsApp Me

sptan818@gmail.com

<https://www.sophiatanproperties.com>



Scan QR Code

L3008899K
R005309D

Huttons Call for Viewing
The Agency of Choice +65-91441214